

LaundryCard X-Changer Cabinet v2 Parts Manual - Current

Overview

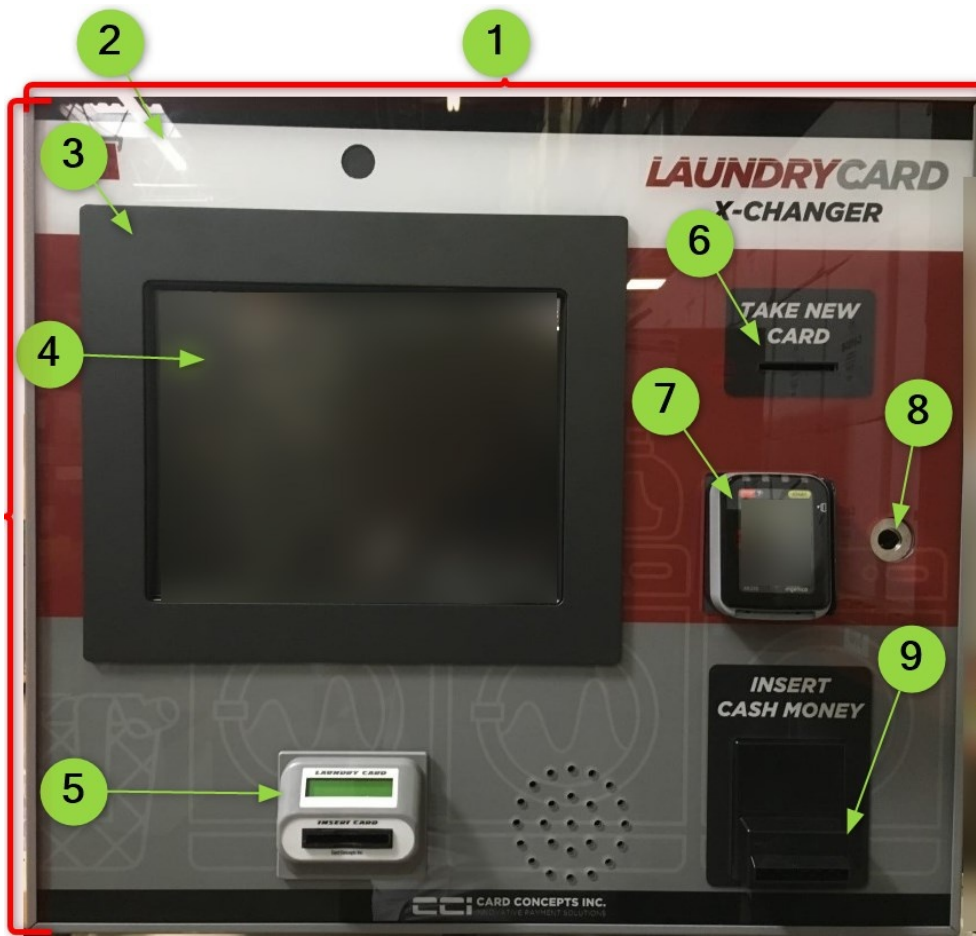
This document lists the components of the current model of the LaundryCard V2 Cabinet and its ancillary parts.



Cabinet Front Door - Exterior

On This Page

- [Cabinet Front Door - Exterior](#)
- [Cabinet Front Door - Interior Main Hardware Components](#)
- [Cabinet Front Door - Interior Hardware Components Continued](#)
- [Cabinet Door - Interior Cabling](#)
- [Cabinet - Internal - Front - Hardware](#)
- [Cabinet - Internal - Back - Hardware](#)
- [Cabinet - Internal - Rear](#)
- [Cabinet - Internal - Back - Cabling](#)
- [Cabinet - Internal - Rear - Tripp-Lite Cabling](#)
- [Related Documents](#)

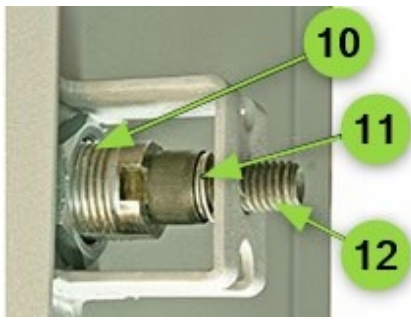


REF	PART NUMBER	DESCRIPTION	COMMENTS
1	C-1400R2	Shell Cabinet	Replaced C-1400R1
2	C-1417-EMV	Acrylic Panel - Build: XCH Incl EMV mounting for C-1008 Silk Screened	Replaced C-1416
3	C-1053B	Front Mount Bezel For C-1053	
4	C-1052	Elo LCD Touch Monitor	Replaced C-1053
5	C-0103-B	LaundryCard Reader	
6	C-1025	LaundryCard Card Dispenser	
7	C-1008	Ingenico iUC285 reader EMV, NFC, Mag Stripe	Must have LaundryCard V9 Software
8	C-1250	Medeco Lock Shells w/ Mounting Nut	
9	C-1001	Bill Note Acceptor (BNA)	

10	C-1405	Cabinet Lock Crank Door Handle	Also for versions: V1, V2, Lite
11	C-1251	Key And Lock Set	

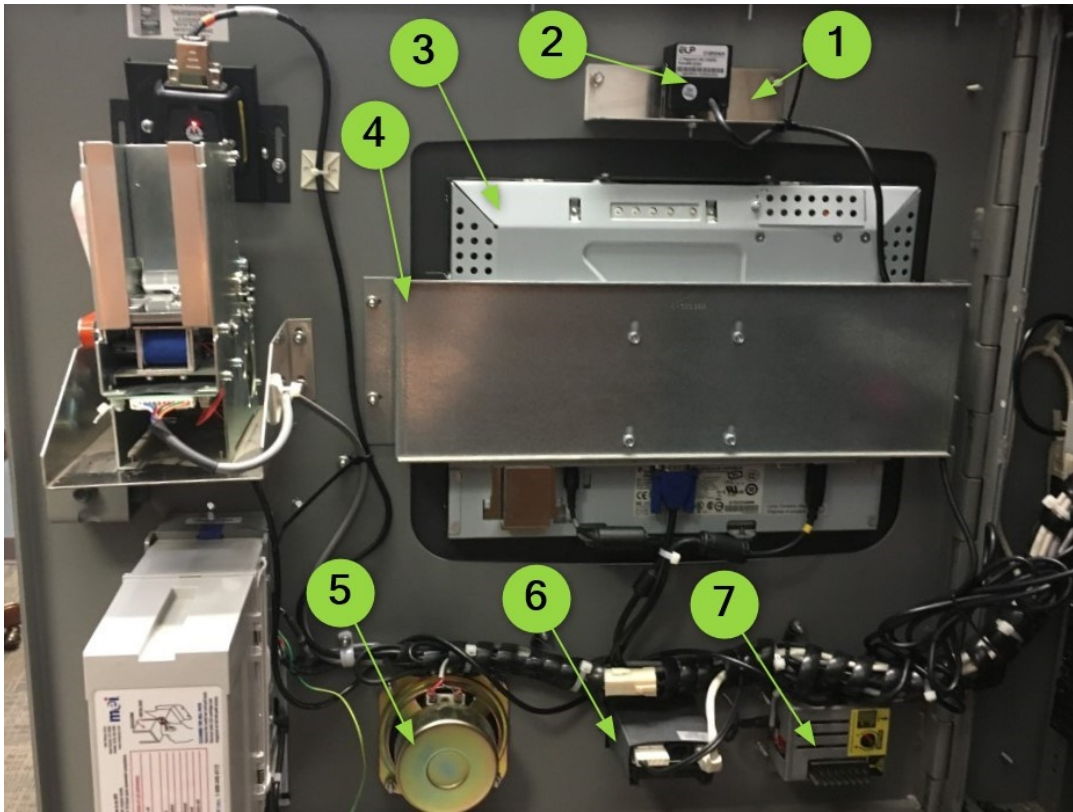
Cabinet Front Door - Interior Main Hardware Components





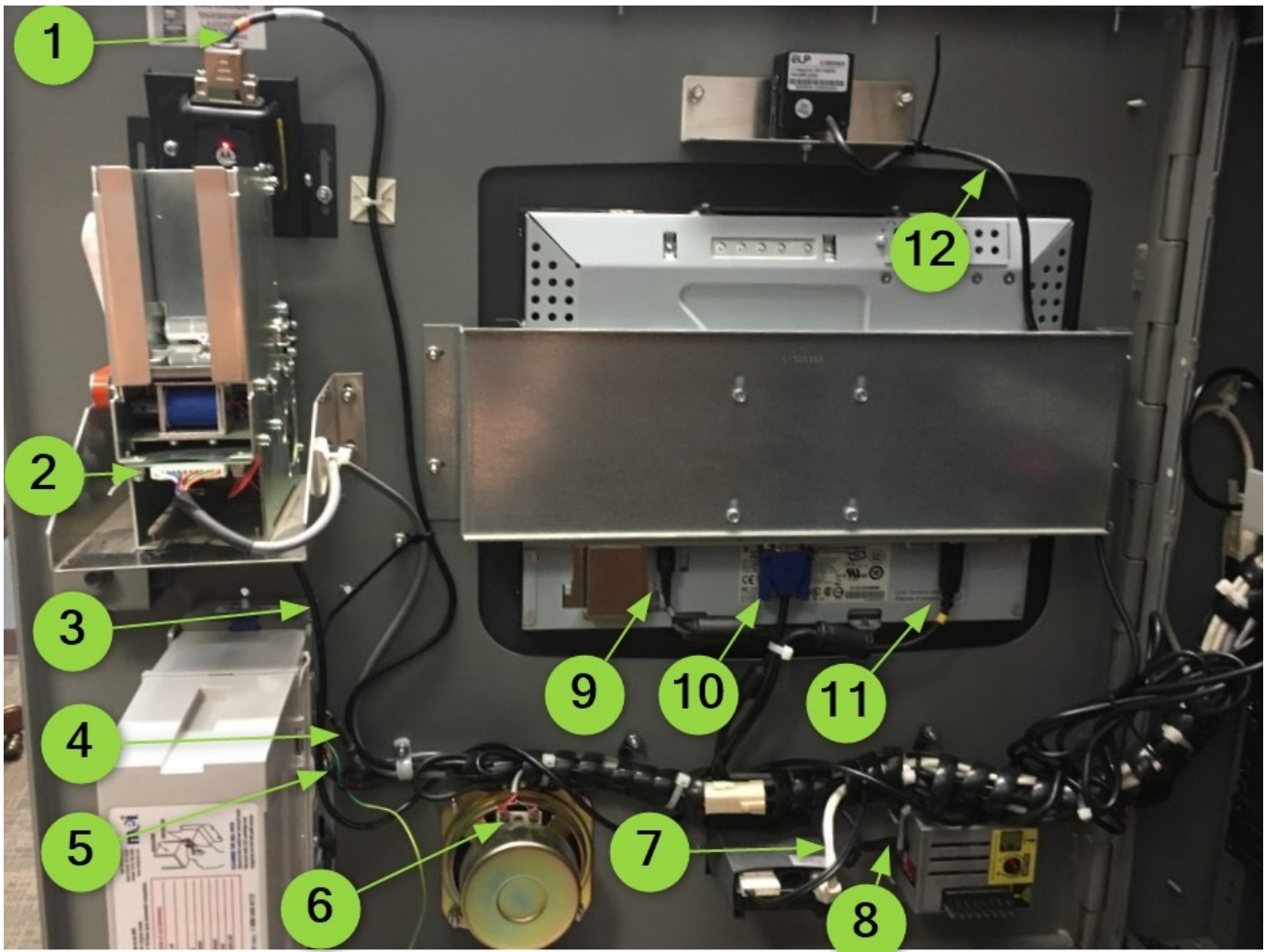
REF	PART NUMBER	DESCRIPTION	COMMENTS
1	C-1400-120	Top Graphic Bracket	
2	C-1042	8-32 Kep Nut	
3	C-1023	Barcode Scanner - Motorola DS457-SR	
4	C-1024C	Barcode Scanner Adapter Plate	
5	C-1024B	Barcode Scanner Swivel Bracket	
6	C-1024A	Barcode Scanner Mounting Bracket	
7	C-1025	Card Dispenser	
8	C-0993	Card Dispenser Guide Tray	
9	C-0995	Card Dispenser Shelf	
10	C-1250	Medeco Lock Shells w/ Mounting Nut	
11	C-1252	Conical Compression Spring 3/4 Lg, .98 Lg OD, .625" S	
12	C-1061	1/2 x 1 Hex Socket Bolt	
13	C-1004	Bill Note Acceptor (BNA)	
14	C-1006-1000	Full Size Money Box for up to \$1000	

Cabinet Front Door - Interior Hardware Components Continued



REF	PART NUMBER	DESCRIPTION	COMMENTS
1	C-1401	Camera Mounting Bracket	If no camera with unit, a Camera Cover Bracket (Black) is provided-C-1400-122
2	C-1407	ELP Fisheye lens box camera	
3	C-1052	Elo 15" LCD Touchmonitor Model	Replaced C-1053
4	C-1053BR	Galvanized Bracket for C-1053	
5	C-1322	Speaker 4 6 oz Magnet Shield	
6	C-0103-B	LaundryCard Reader V3 - RevB Multi-Vend / Bootloader	
7	C-1320	Audio Amplifier - Build: XCH w/ Enclosure	

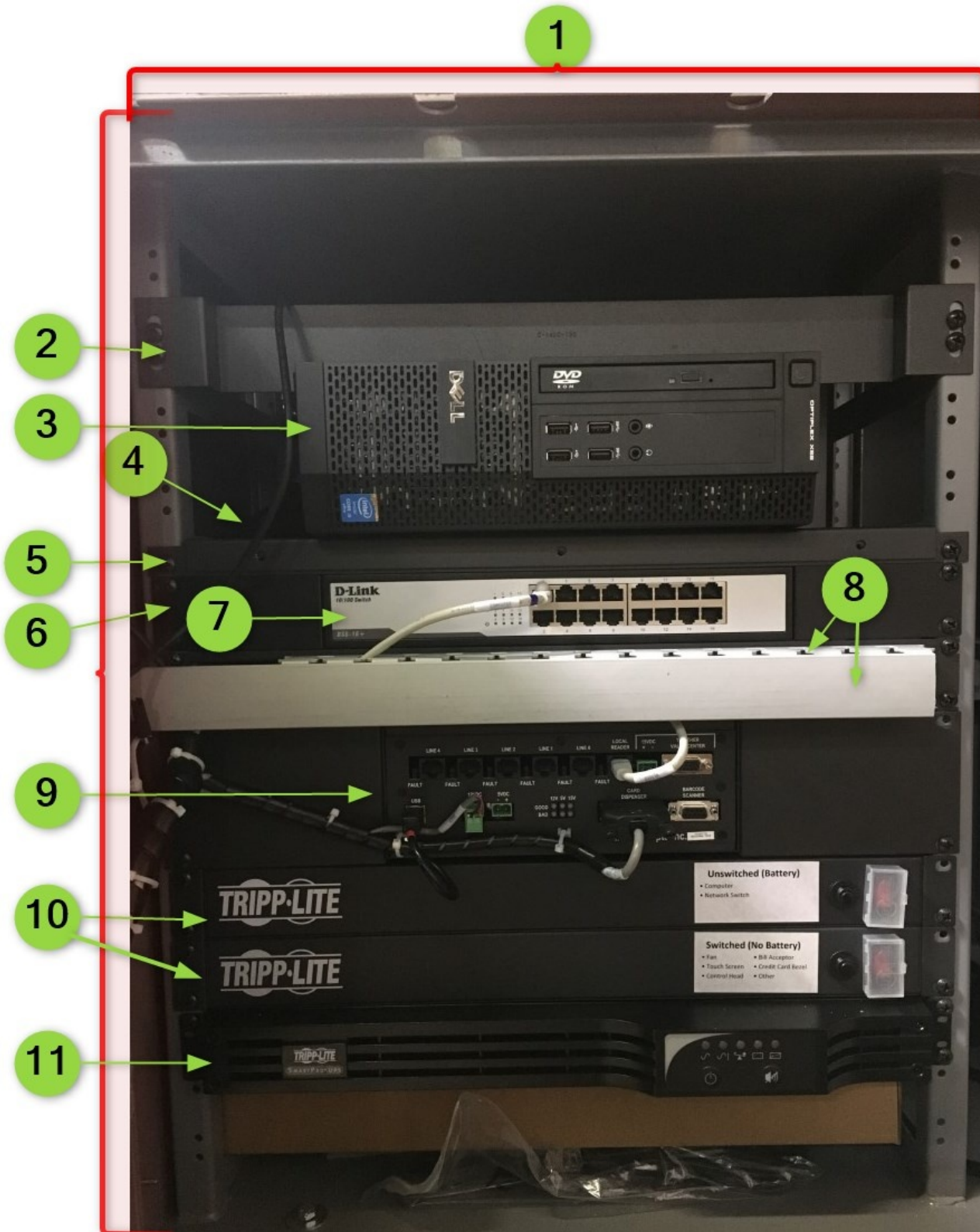
Cabinet Door - Interior Cabling



REF	PART NUMBER	DESCRIPTION	COMMENTS
1	C-0634-R	USB Barcode Scanner Cable	
2	C-0630R1	Control Cable - Build: XCH 54" length for Dispenser	Replaced C-0630
3		USB cable for Ingenico iUC285 EMV Credit Card bezel	Included with Ingenico iUC285 EMV bezel
4	C-1003	BNA Interface - Build: XCH Series 2000 RS232 Cable	
5	C-0640	BNA pwr cable - Build: XCH V2 cabinet Bill Acceptor	
6	C-0622	Speaker Cable - Build: XCH for Audio Amplifier	
7	C-0174	UTP Cat5 Cable 3' - Grey Snag Resistant Boots	
8	C-1321	Stereo Cable - Build: XCH 6' 3.5mm (Black)	
9	C-1052P	ELO Power Supply Cable For C-1052 & C-1053	Replaced C-1053P
10		VGA Cable from Monitor to Dell PC	
11	C-1330	6' USB Cable - Build: XCH A to B format	

12		USB Camera cable	Included with camera
----	--	------------------	----------------------

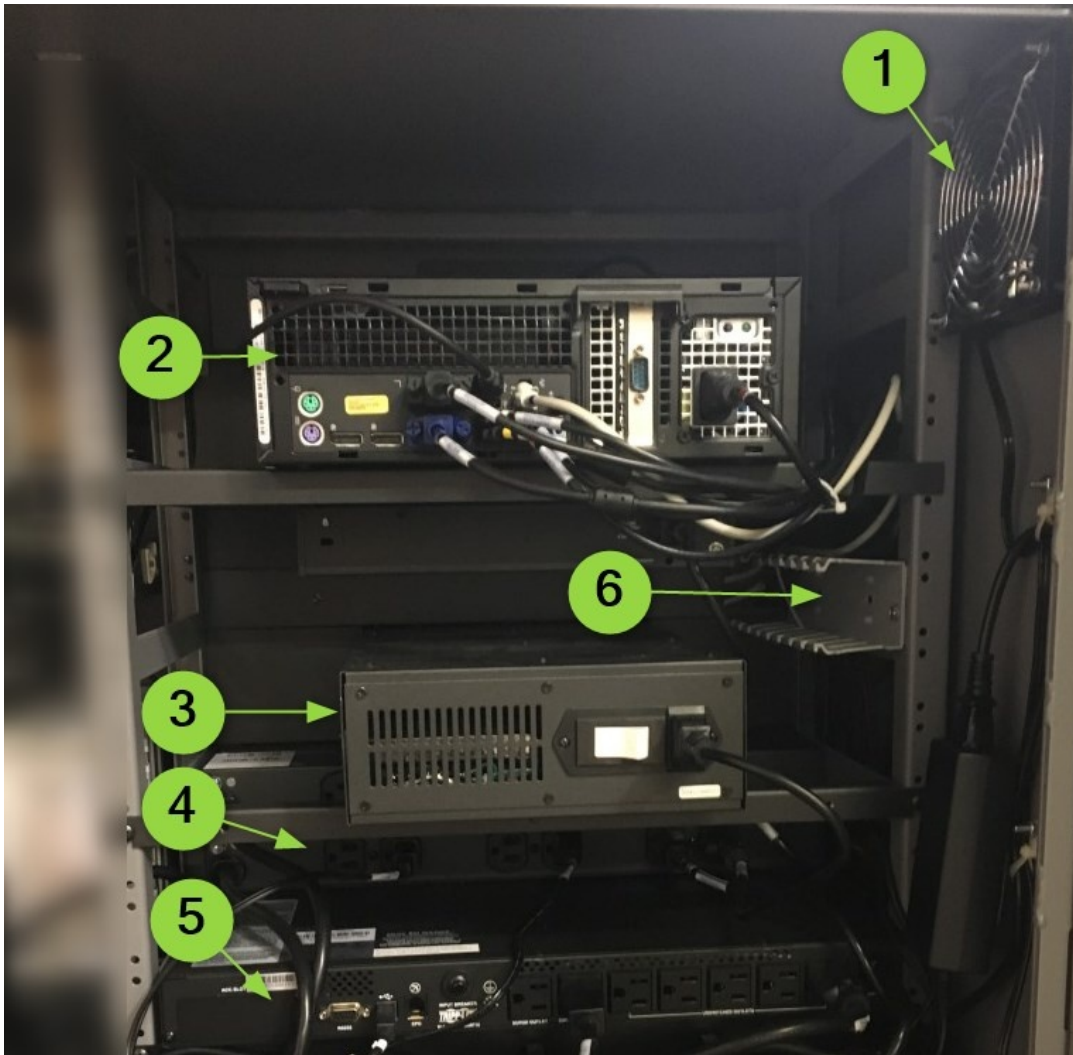
Cabinet - Internal - Front - Hardware



REF	PART NUMBER	DESCRIPTION	COMMENTS
-----	-------------	-------------	----------

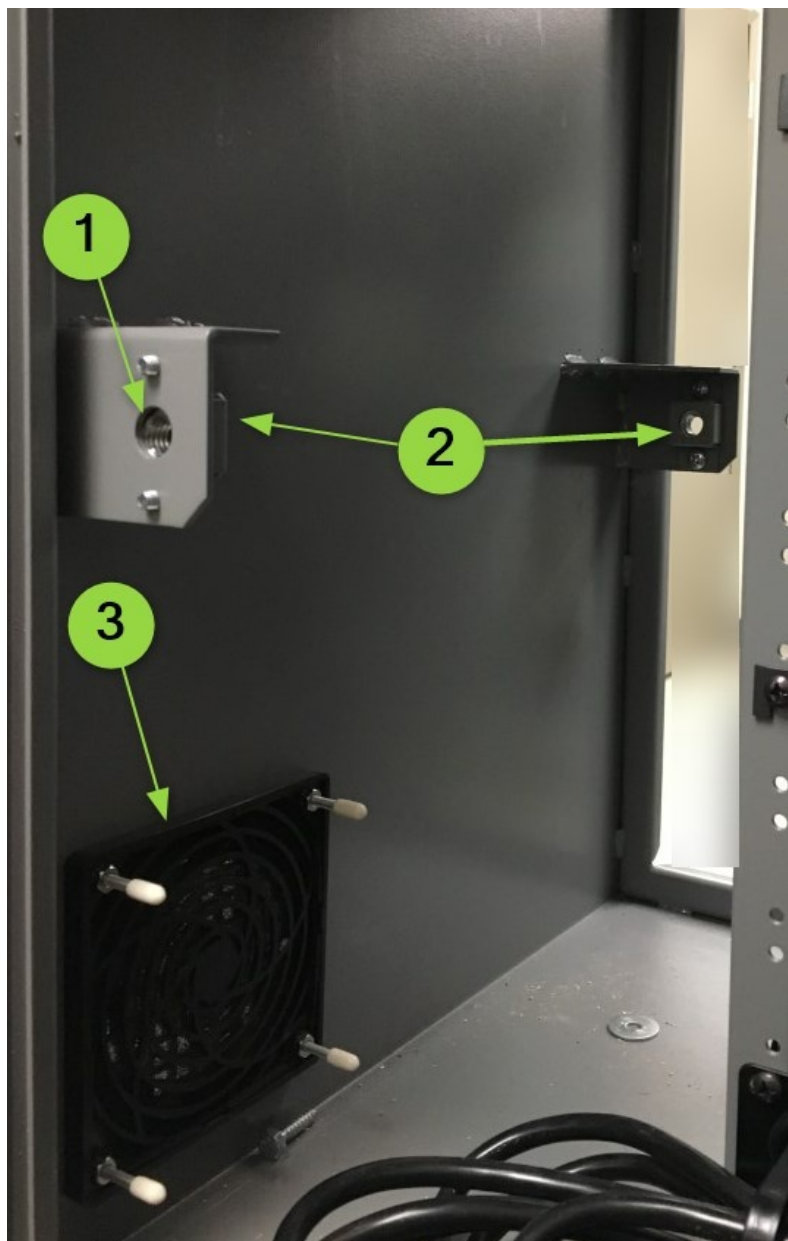
1	C-1400R2	Shell Cabinet	Replaced C-1400R1
2	C-1400-130	PC Holding Bracket	
3	C-0600-XE3	Dell XE3 Computer	Replaced C-0600-XE2
4	C-1400-131	Component Shelf - Build: XCH Painted Blk Charcoal Texture	
5	C-1400-132	Shelf Support Bracket	
6	C-0560	Rack Filler Panel	
7	C-0629	Dlink DSS-16 Switch	
8	C-1375	Slotted Wall Duct - 1 ft 1.5" x 1.5"	
8	C-1376	Slotted Duct Cover 1.5"	
9	C-0525	CCI Control Head	
10	C-0517	TrippLite Surge - Build: XCH 120V, 15A, 6-Outlet Power Strip Rack Mount 1U	Replaced C-0515 - Ethernet Power Controller 8 Channel EPC *ASR*
11	C-1040	Tripp Lite Smart Pro 500VA 120V RT-1U UPS Rack Mount	

Cabinet - Internal - Back - Hardware



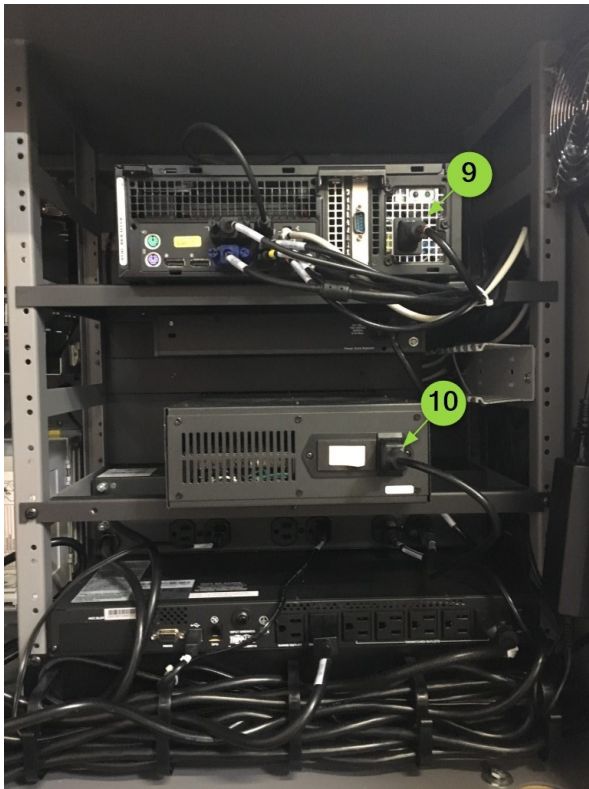
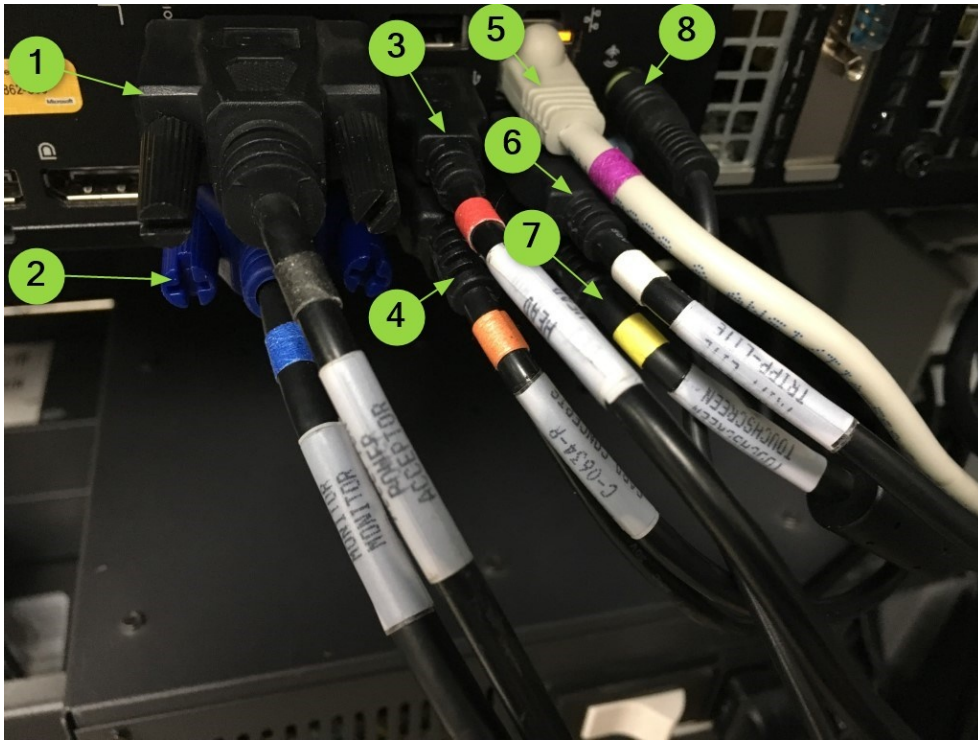
REF	PART NUMBER	DESCRIPTION	COMMENTS
1	C-1277	Finger Guard/Cooling Fan	
1	C-1275	Orion Cooling Fan 120MM 81 CFM	
2	C-0600-XE3	Dell XE3 Computer	Replaced C-0600-XE2
3	C-0525	CCI Control Head	
4	C-0517	TrippLite Surge - Build: XCH 120V, 15A, 6-Outlet Power Strip Rack Mount 1U	Replaced C-0515 - Ethernet Power Controller 8 Channel EPC *ASR*
5	C-1040	Tripp Lite Smart Pro 500VA 120V RT-1U UPS Rack Mount	
6	C-1370	Cable Duct - 2" x 2"	
6	C-1371	2" Cable Duct Cover	Not pictured

Cabinet - Internal - Rear



REF	PART NUMBER	DESCRIPTION	COMMENTS
1	C-1061-N	1/2" Nut	Replaced C-1069
2	C-1432	Lock Nut Cup	Requires (2) C-1433 screws
3	C-1278	120mm Fan Cooling Kit Guard, Retainer, Media 30 PPI	

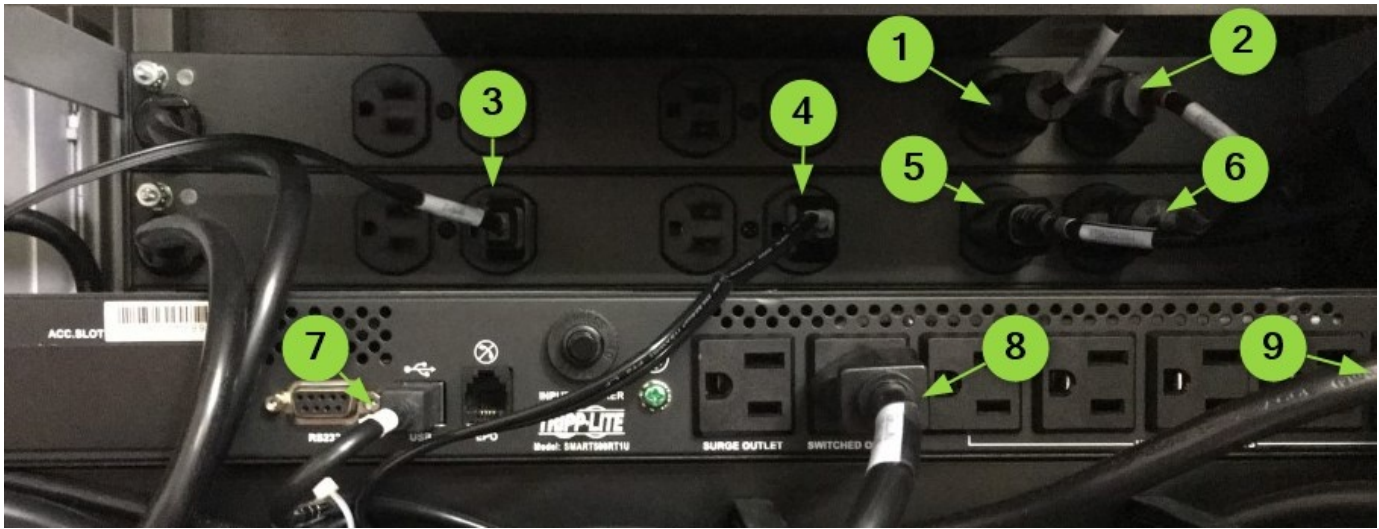
Cabinet - Internal - Back - Cabling



REF	PART NUMBER	DESCRIPTION	COMMENTS
1	C-1321	Stereo Cable - Build: XCH 6' 3.5mm	Grey/Black label- Included with Unit
2		VGA Cable from Monitor to Dell PC	Blue label- Included with ELO Monitor Unit

3	C-1330	6' USB Cable - Build: XCH A to B format	Red label
4	C-0634-R	USB Barcode Scanner Cable	Orange label- Included with Unit
5	C-0174	UTP Cat5 Cable 3' 3' - Grey (Connects Dell PC to Network Switch)	Purple/Pink label
6	C-1330	6' USB Cable - Build: XCH A to B format (Connects Dell PC to Tripp-Lite battery back-up)	White label- Included with Tripp-Lite Battery Unit
7	C-1330	6' USB Cable - Build: XCH A to B format (Connects Dell PC to Touch Screen)	Yellow label- Included with the Touchscreen Unit
8	C-1321	Stereo Cable - Build: XCH 6' 3.5mm (Connects Dell PC to Amplifier)	
9		Dell PC power cable connects to the Unswitched Tripp-Lite	Brown label - Included with Dell PC Unit
10		Control Head Power cable connects the Control Head to the Switched Tripp-Lite	Included with the Control Head Unit

Cabinet - Internal - Rear - Tripp-Lite Cabling



REF	PART NUMBER	DESCRIPTION	COMMENTS
1		Network Switch Ethernet cable to Top Tripp-Lite unit (C-0517)	
2		Dell PC power cable connects Top Tripp-Lite unit (C-0517)	Brown Label - Included with Computer
3		Bill Acceptor Power cable to Bottom Tripp-Lite unit (C-0517)	
4		Fan Power cable to Bottom Tripp-Lite unit (C-0517)	
5		Touch Screen Monitor cable to Bottom Tripp-Lite unit (C-0517)	Grey/Black label
6		Control Head cable to Bottom Tripp-Lite unit (C-0517)	
7		USB Cable From Dell PC to Tripp-Lite unit (C-1040)	White Label

8		Cable from Bottom Tripp-Lite unit (C-0517) to Switched outlet of Tripp-Lite unit (C-1040)	
9		Cable from Top Tripp-Lite unit (C-0517) to Unswitched outlet of Tripp-Lite unit (C-1040)	

Related Documents

[V2 Wiring Diagram](#)